



- Parts:** 1 x black frame
1 x black water base
1 x battery
1 x RF receiver
2 x remote control
2 x washer
4 x nut M10
1 x 19 spanner
1 x drum cap wrench
1 x key

NEW



🇬🇧 Double sided pavement board with LED, which enlightens the message. Snap-frames with 44 mm aluminum profiles and safe corners. Locked battery compartment - charger incl. Anti-reflex PET front sheets. Suitable for outdoor use. The foot is made of heavy duty plastic and can be filled with water or sand to give a really good stability. Please add anti-freeze if below 0° C. Easy and fast to assemble. Two wheels make the board easy to move. Optional carry tool.

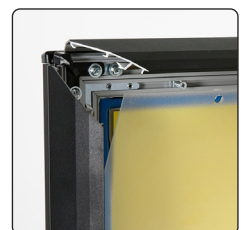
🇩🇪 Doppelseitige Kundenstopper mit LED, die das Botschaft aufhellt. Klapprahmen aus 44 mm Aluminiumprofilen und runde Ecken. Verschlossenes Batteriefach - Ladegerät inkl. Antireflex PET Frontplatten. Geeignet für den Außenbereich. Fuß aus Kunststoff für Wasser oder Sand, um eine wirklich gute Stabilität zu erzielen. Bitte Frostschutzmittel hinzufügen, wenn die Temperatur unter 0° C liegt. Einfach und schnell zu montieren. Zwei Räder machen der Ständer einfach zu bewegen. Tragewerkzeug als Zubehör.

🇩🇰 Dobbeltsidet gadeskilt med LED til oplysning af budskabet. Klappammer af 44 mm alu-profiler og afrundede hjørner. Batterirum med lås - inkl. batteri og oplader. Antirefleks PET frontplade. Velegnet til udendørs brug. Foden er lavet af kraftig plast og kan fyldes med vand eller sand for at give en rigtig god stabilitet. Tilsæt frostvæske, hvis det er under 0° C. Nem og hurtigt at montere. To hjul gør det let at flytte skiltet. Mulighed for tilkøb af transportværktøj.



Transport tool art. 12905

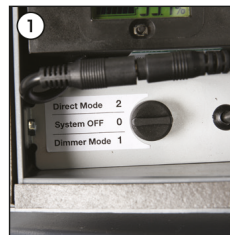
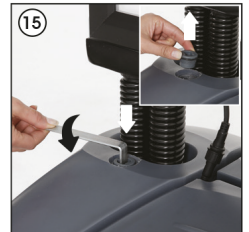
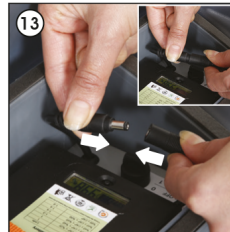
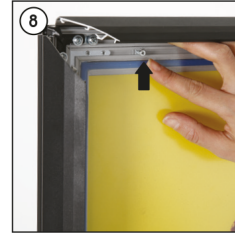
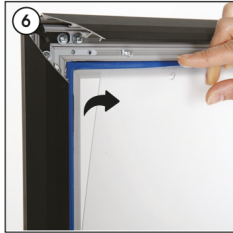
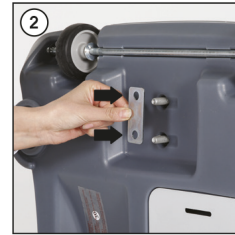
Use a transport tool for moving if the board is filled with water or sand



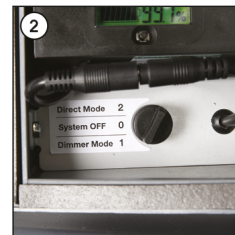
Model	Article	Poster size	- visible area	Weight filled	Power	Total W x H x D	Package size and weight	Pallet size and quantity
549	4182	59,4 x 84,1 cm A1	58,2 x 82,9 cm	40 kg	30 W	72 x 113 x 53 cm	68 x 114 x 4 + 56 x 75 x 18 cm 29 kg	80 x 120 x 220 cm 8 pcs.

Each product incl.:

- 1 x frame
- 1 x water base
- 1 x battery
- 1 x RF reciever
- 2 x remote controle
- 2 x washer
- 4 x nut M10
- 1 x 19 spanner
- 1 x drum cap wrench
- 1 x key



System off 0

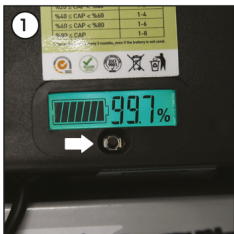


Dimmer Mode 1: Remote control will be activate. The frame works with %50 or %100 bright.

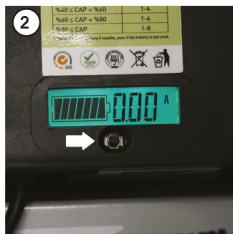


Direct Mode 2: The battery connect directly to illumination. The frame works with %100 bright.

One button can shows four specifications



Capacity of Battery (0 - 100 %)



Instant consumption (0 - 2) Ampere



Capacity of battery (0 - 8) Ampere/hour



Battery voltage (20 - 26,6) Volt

